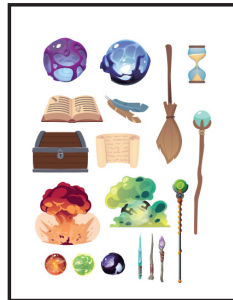




Pushy is looking to go on an epic new adventure... with YOU! Introducing the "Project Push Pop" DIY series, where you and your kids can join in on the fun of ultra-creative toy & action figure photography. Create your own adventure diorama with your cast of Push Pop Candy characters, now with FUN NEW FACES to choose from! Below are instructions on how to start a WIZARDING WORLD ADVENTURE!!

INSTRUCTIONS:

1. Print out your gear, props, costumes, and backgrounds on the following pages. You can also use your own diorama-making supplies, toys, and materials from around the house or yard!

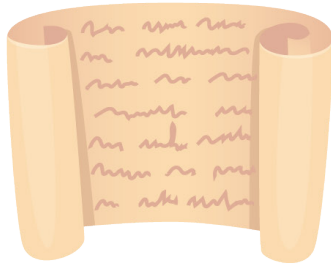
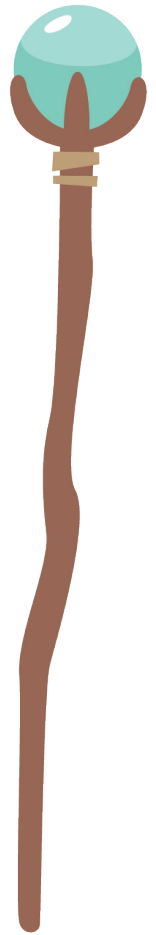
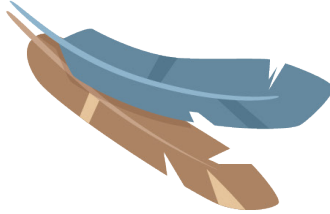
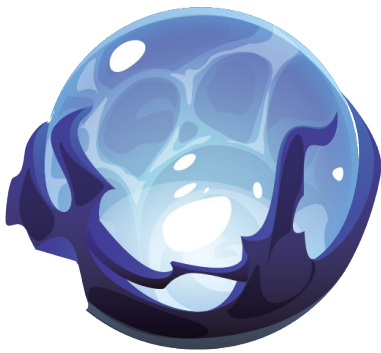


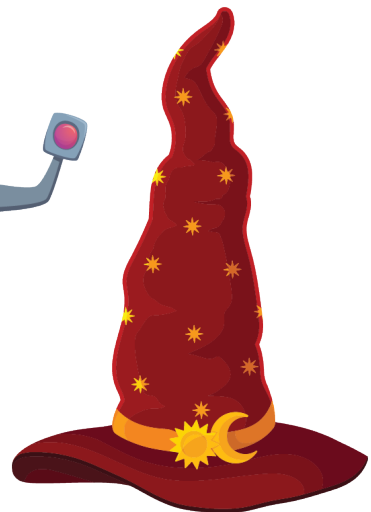
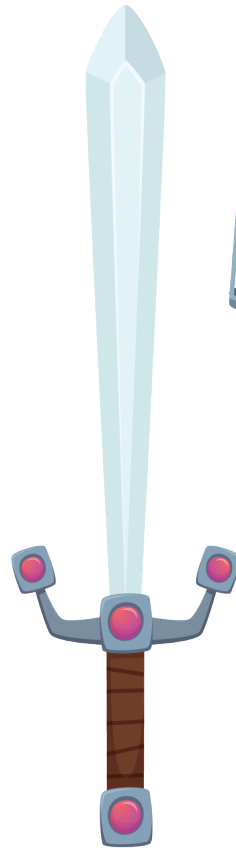
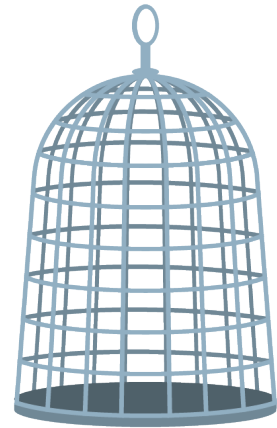
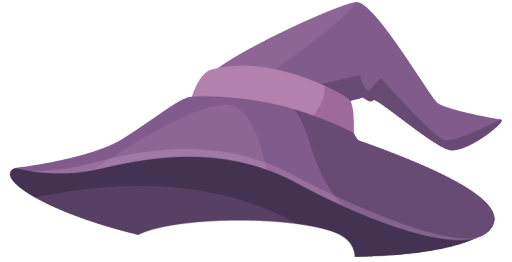
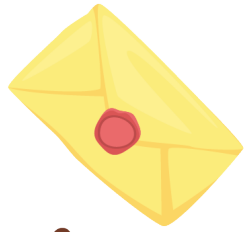
2. Cut out the pieces you want to use and attach to your Push Pop characters. Attach pieces to your background to make your adventure even more epic!

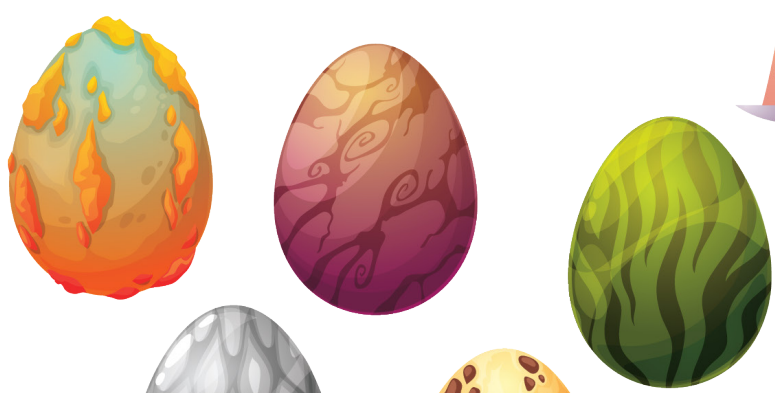


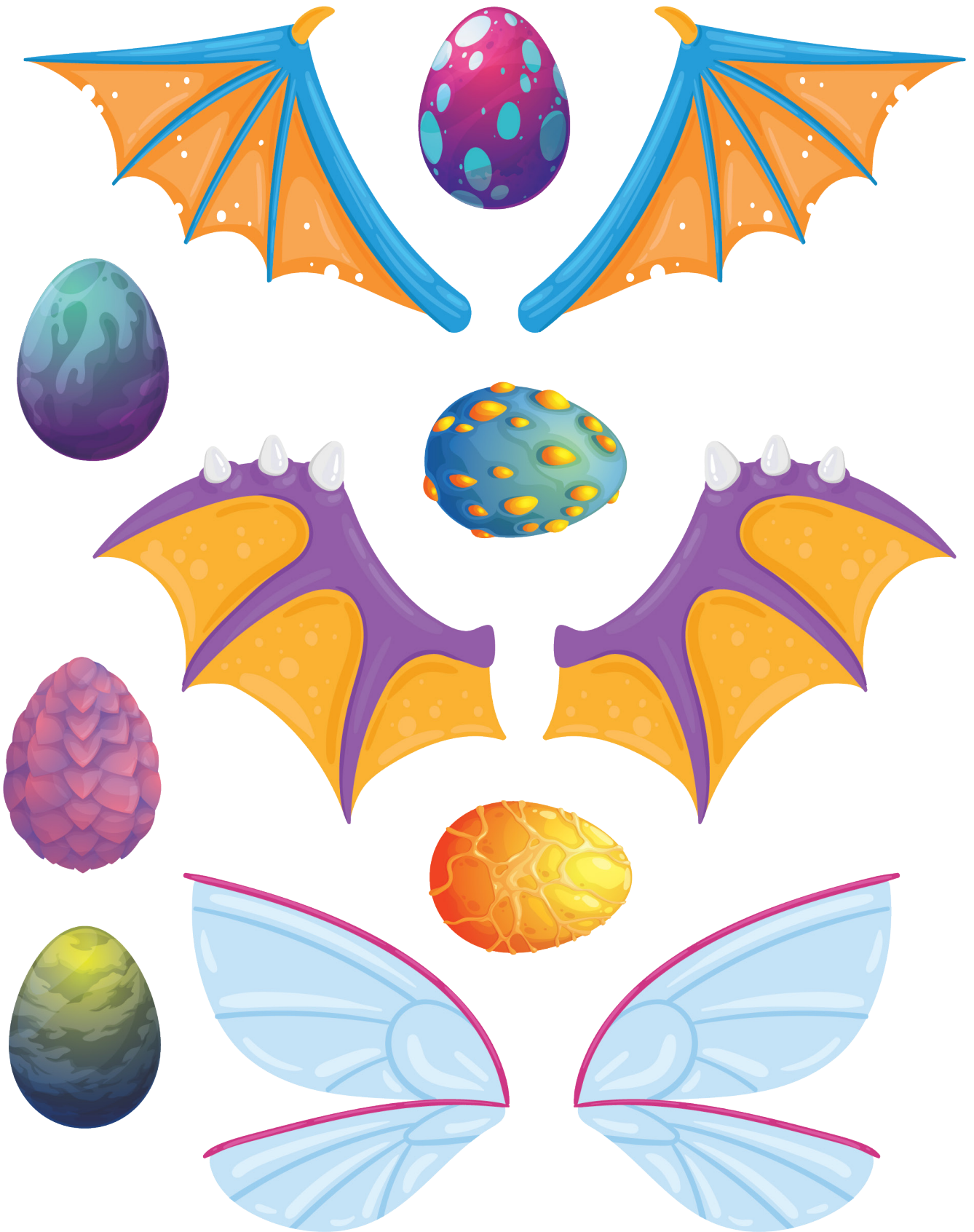
3. Use your creativity (and camera) to craft and capture some exciting new adventures! Be sure to post your photos on social and tag [@pushpopofficial](#) and [#ProjectPushPop](#)

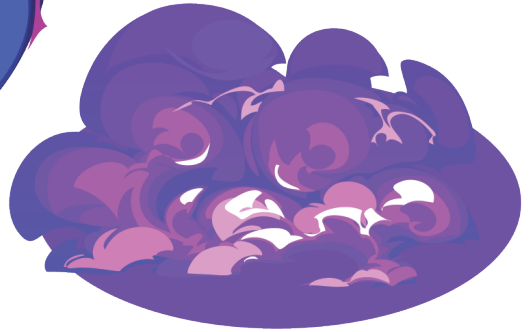
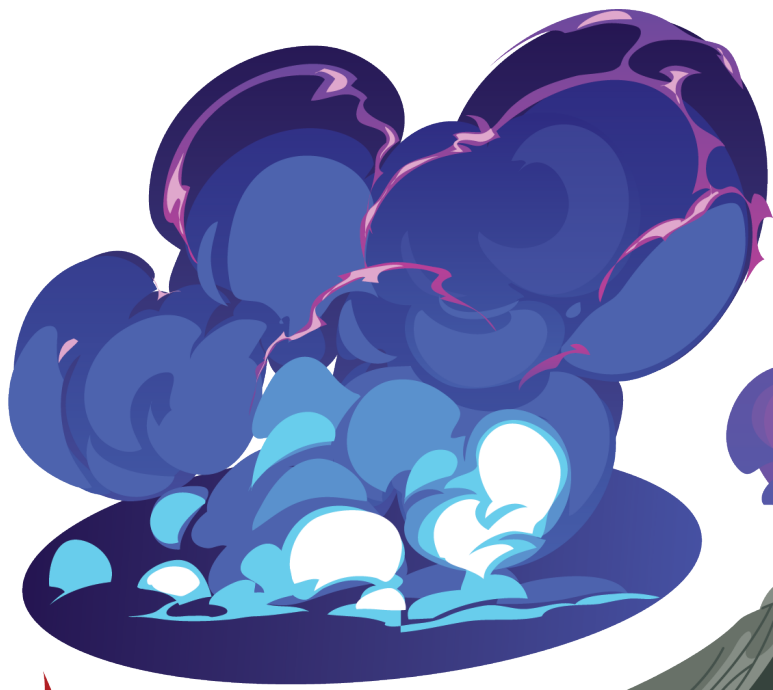














Lesson 7

>Lorem ipsum dolor sit amet, males

>Lorem ipsum dolor sit amet, males liberatis
re quo, and elit grassa nulloque cum.



